

# AC LED Tunnel Light (Ceiling / Wall type)



## 01 Features

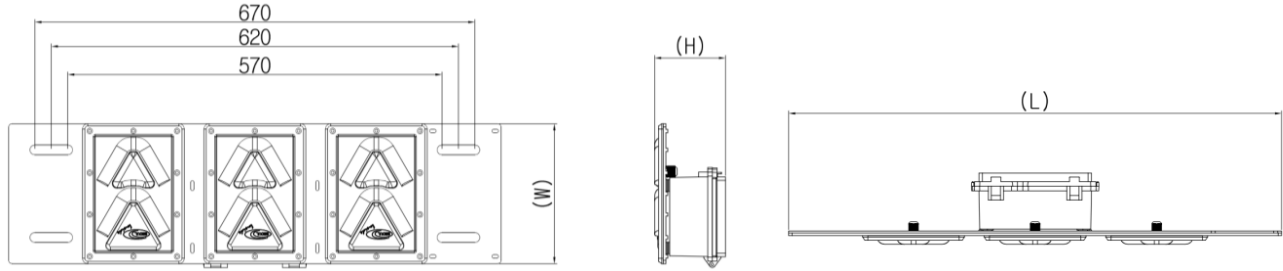


- Direct AC LED Module
- No SMPS
- Bracket can be customized.
- High efficiency (Typ. 140 lm/W ~)
- A slim construction
- Weight lightening
- Save Electricity bill due to long life
- Power Factor  $\geq 98\%$
- Apply Surge Protection Device

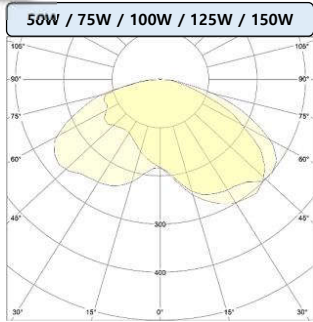
## 02 Product specifications

Model	TD-050-2.0N	TD-075-2.0N	TD-100-2.0N	TD-125-2.0N	TD-150-2.0N
Power consumption	50 W	75 W	100 W	125 W	150 W
Input voltage	220 Vac	220 Vac	220 Vac	220 Vac	220 Vac
Light Efficiency	Typ. 140 lm/W	Typ. 140 lm/W	Typ. 140 lm/W	Typ. 140 lm/W	Typ. 140 lm/W
CRI	Ra 75 ↑				
CCT	5,000 K				
Weight	5.0 kg	5.4 kg	5.4 kg	5.7 kg	5.7 kg
IP code	66				
SPD	20 kA ( I <sub>max</sub> )				
Light distribution type	Type III	Type III	Type III	Type III	Type III
Size (L x W x H mm)	750 x 212.5 x 108 (Exclude Bracket)				
Certification	CE, PSE	CE, PSE	CE, PSE	CE, PSE	CE, PSE

**03 Dimension**



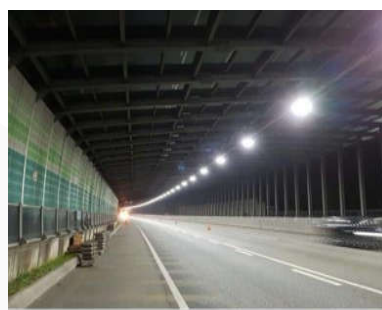
**04 Light distribution curve**



**05 Reference**



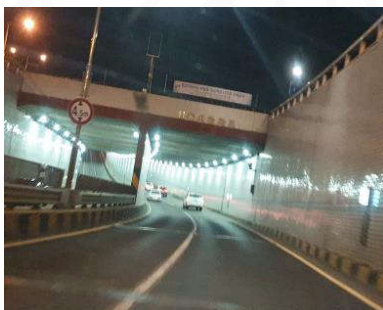
Expressway Tunnel



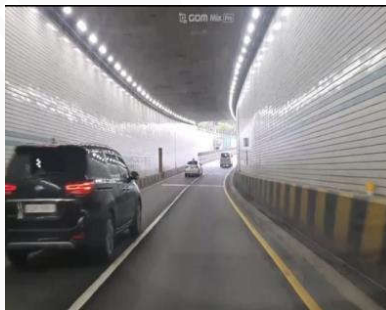
Expressway Tunnel



Tunnel, Dangjae



Tunnel, Ansan-si



Tunnel, Ansan (Wongok)



Tunnel, Gajae



**VIoT Technology Joint Stock Company**

33 Hoang Dieu St., Ward 10, Phu Nhuan District, Ho Chi Minh City, Viet Nam

**Tel: +84 93333 27 27**

sales@viotgroup.com | www.viotgroup.com

---